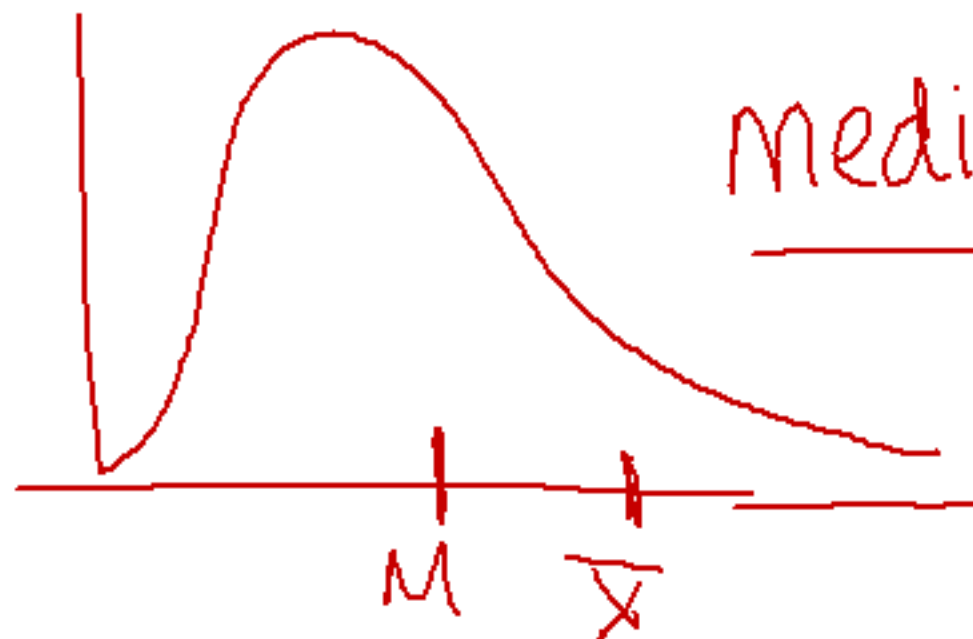


p. 288

3) (a)

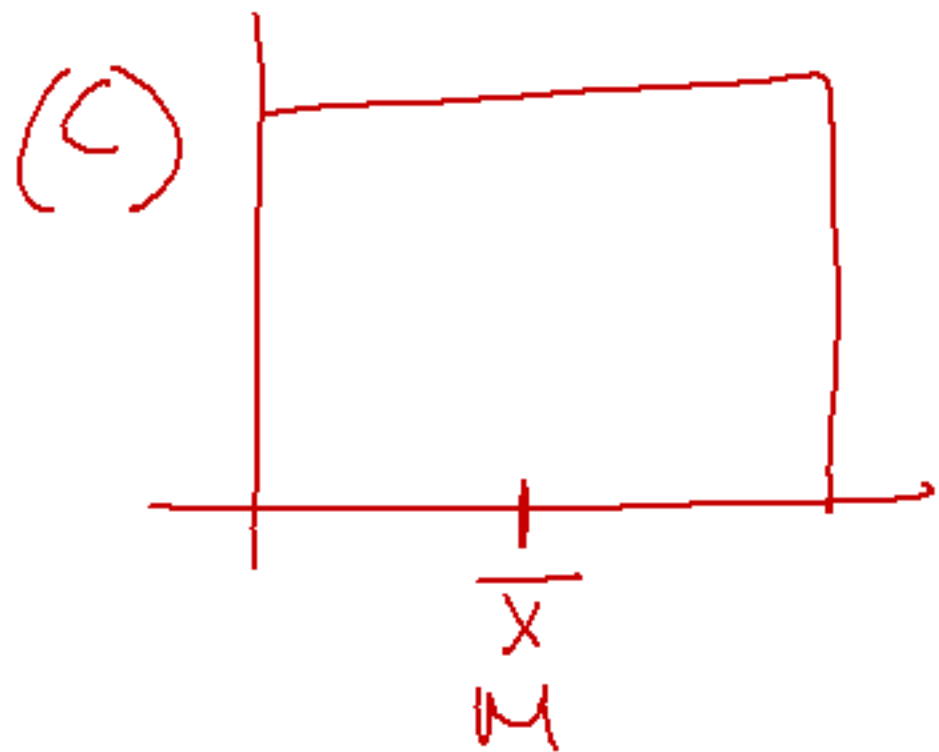


median & quartiles

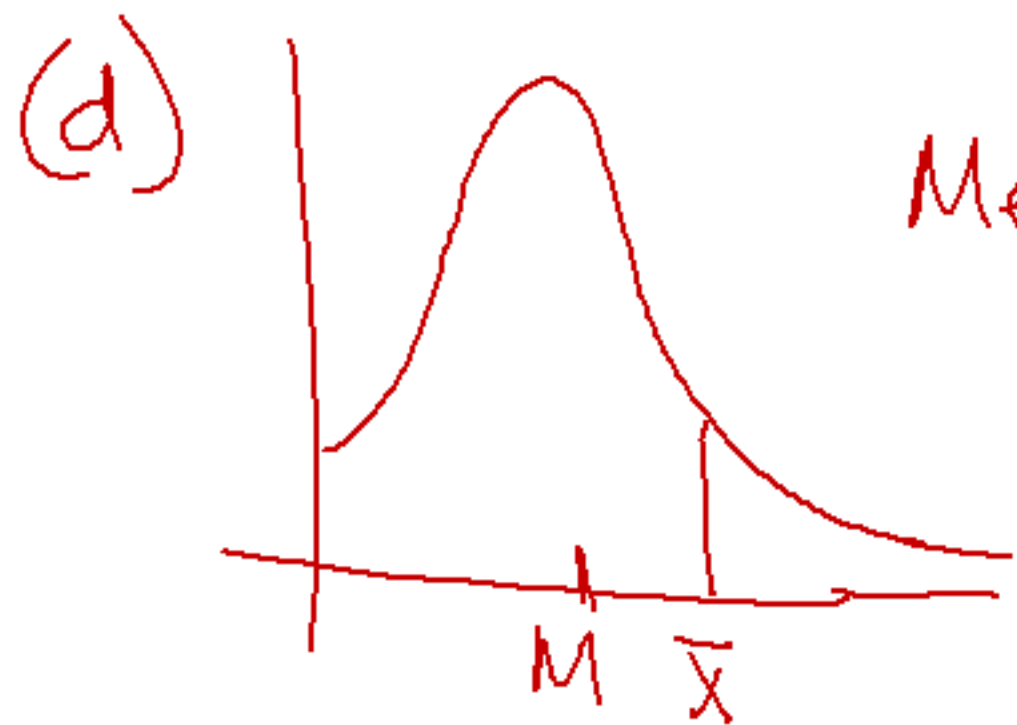
(b)



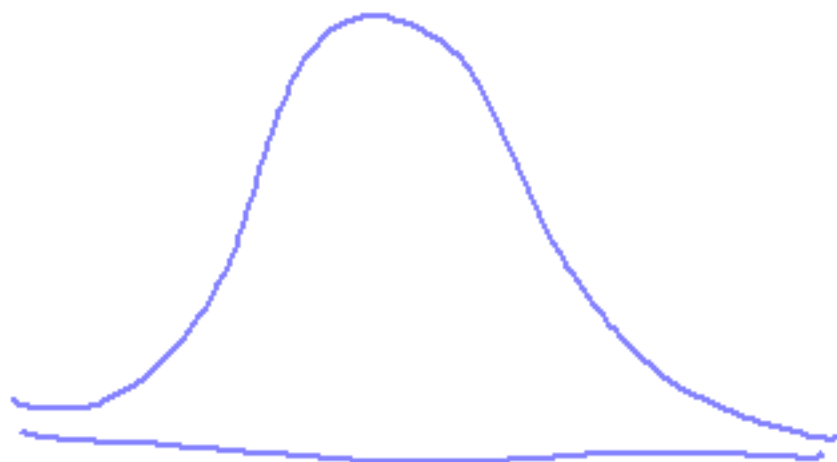
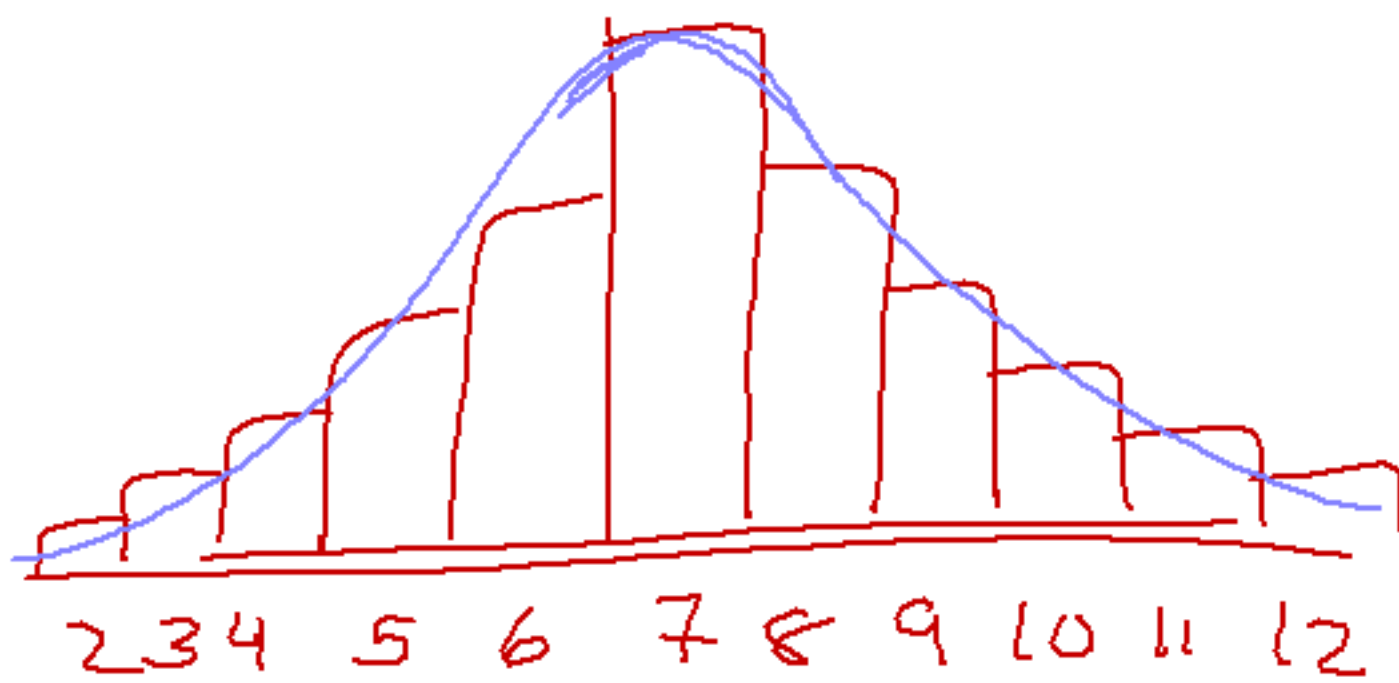
mean & std. dev.



either



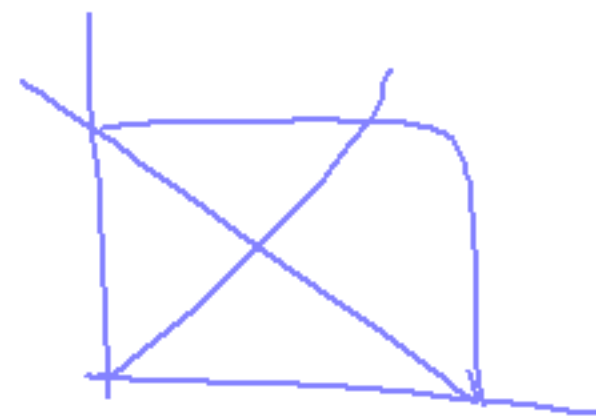
Median & quartiles



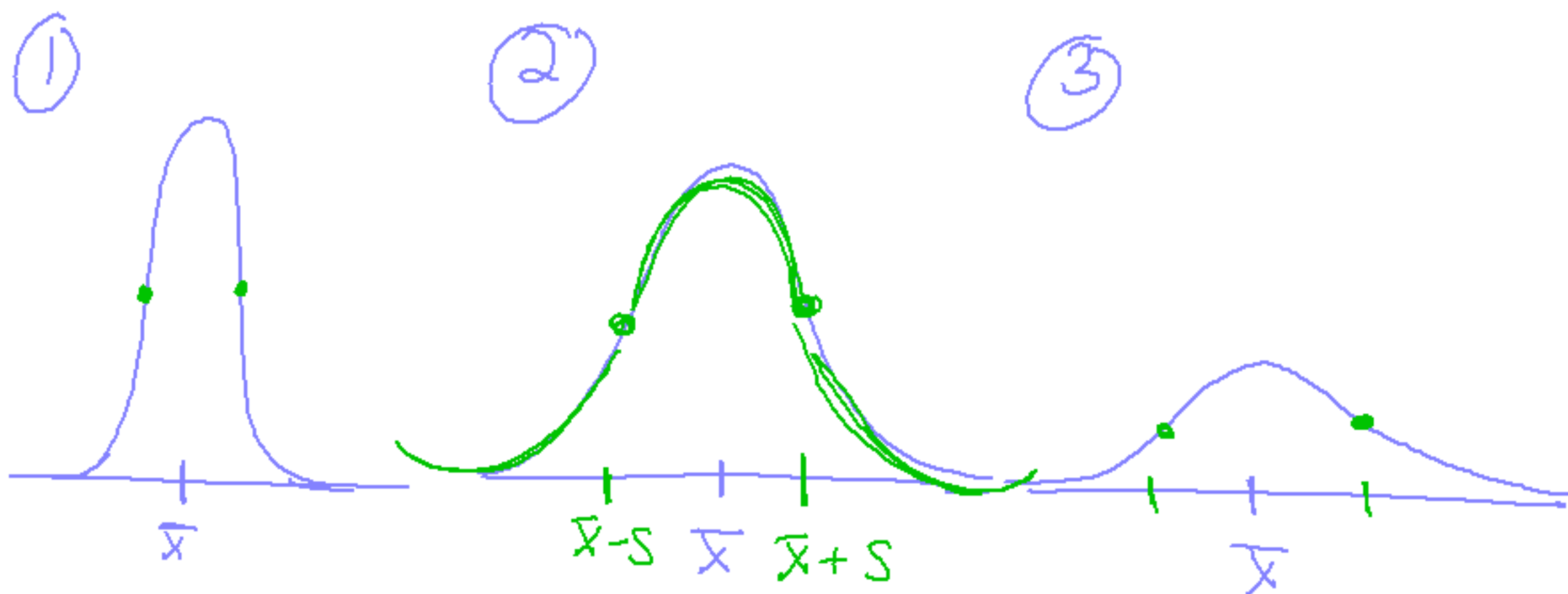
Shape: - symmetric
- bell-shaped



described by...
Mean and Std. dev.



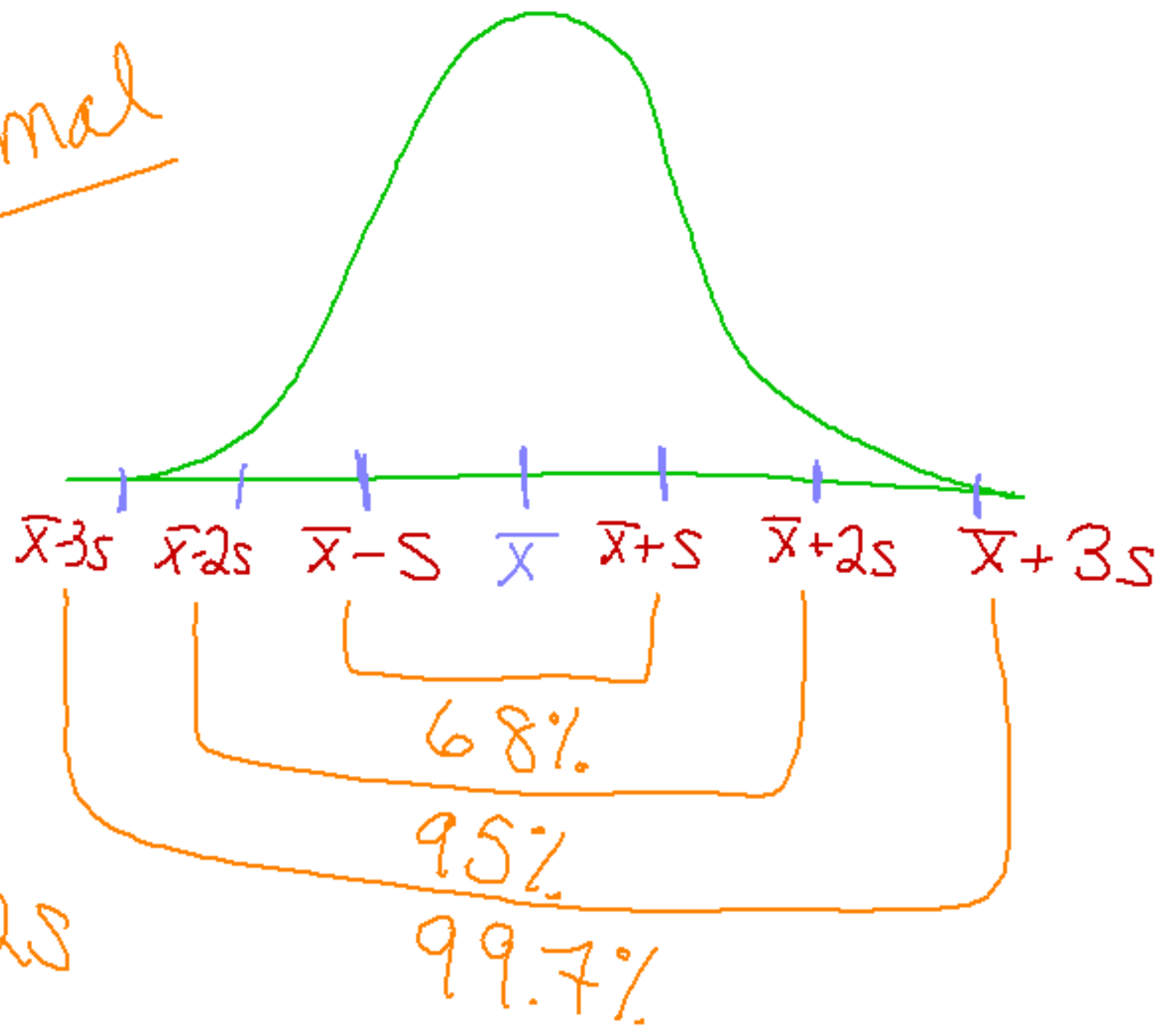
Mean shows center of distribution
Std. dev. shows width of distrib.



$\bar{x} = 10$
 $s = 5$

$\bar{x} = 10$ normal
 $s = 8$

* normal

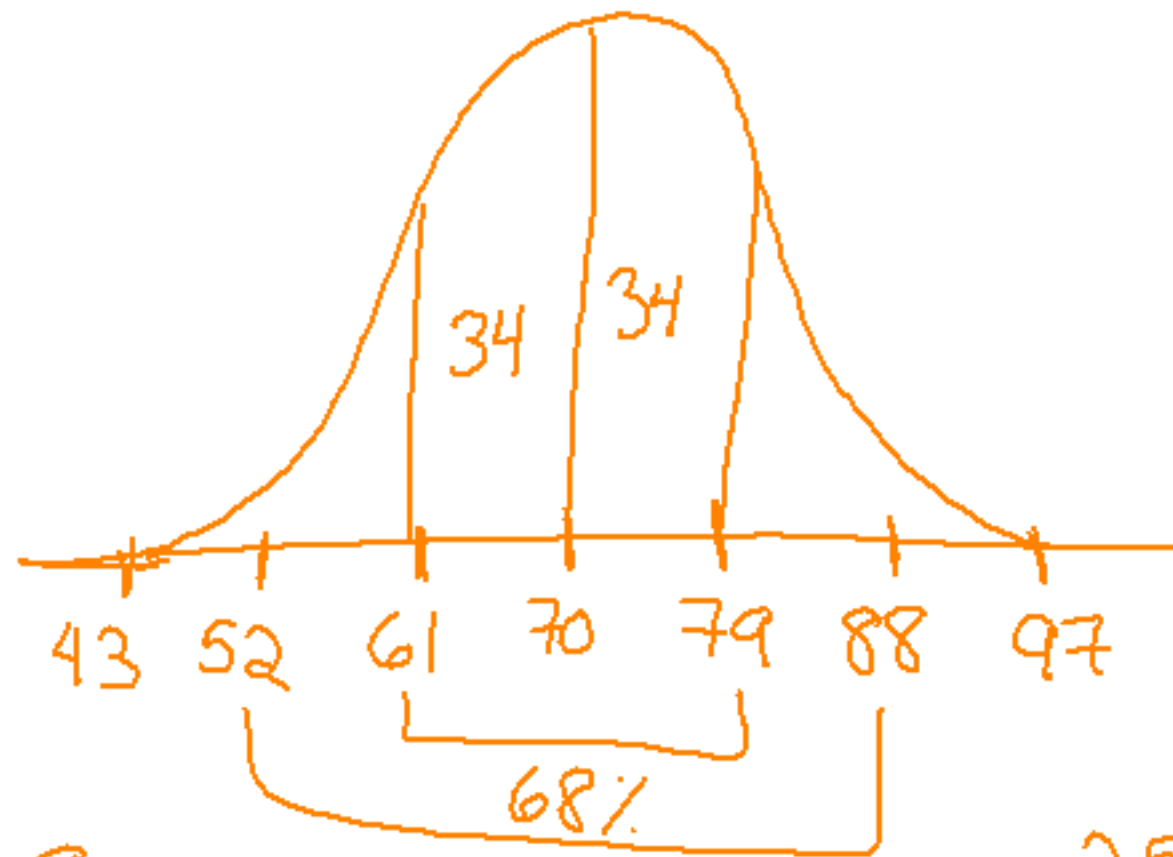


$\bar{x} \pm 2s$

68% of data is btw $\bar{X} \pm S$

95% of data is btw $\bar{X} \pm 2S$

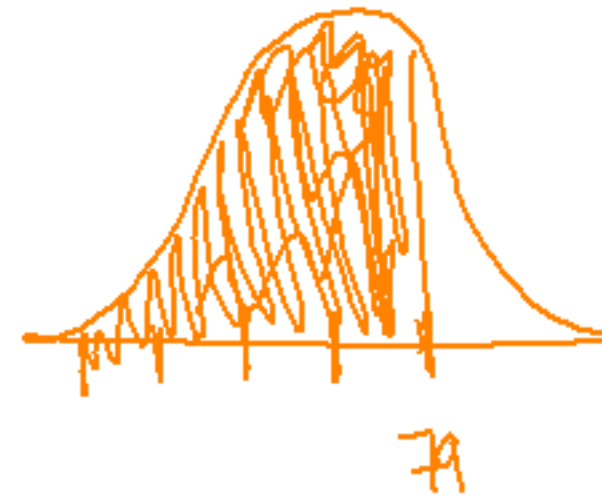
99.7% btw $\bar{X} \pm 3S$



① 68%



④

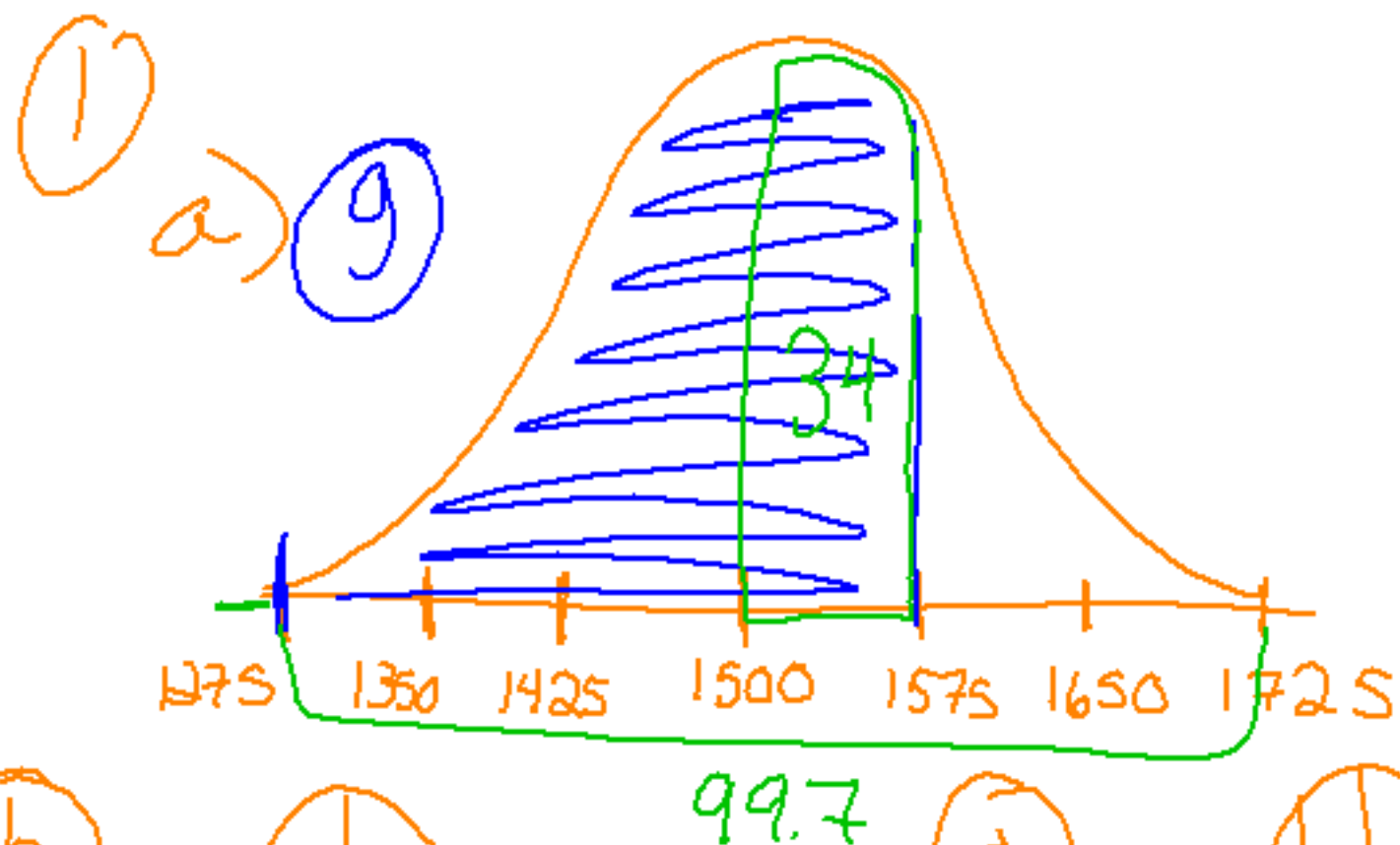


84%



95%

9.5%



2.5%

